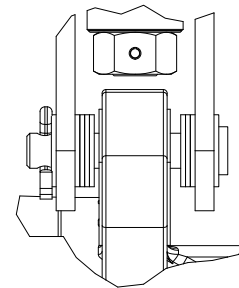


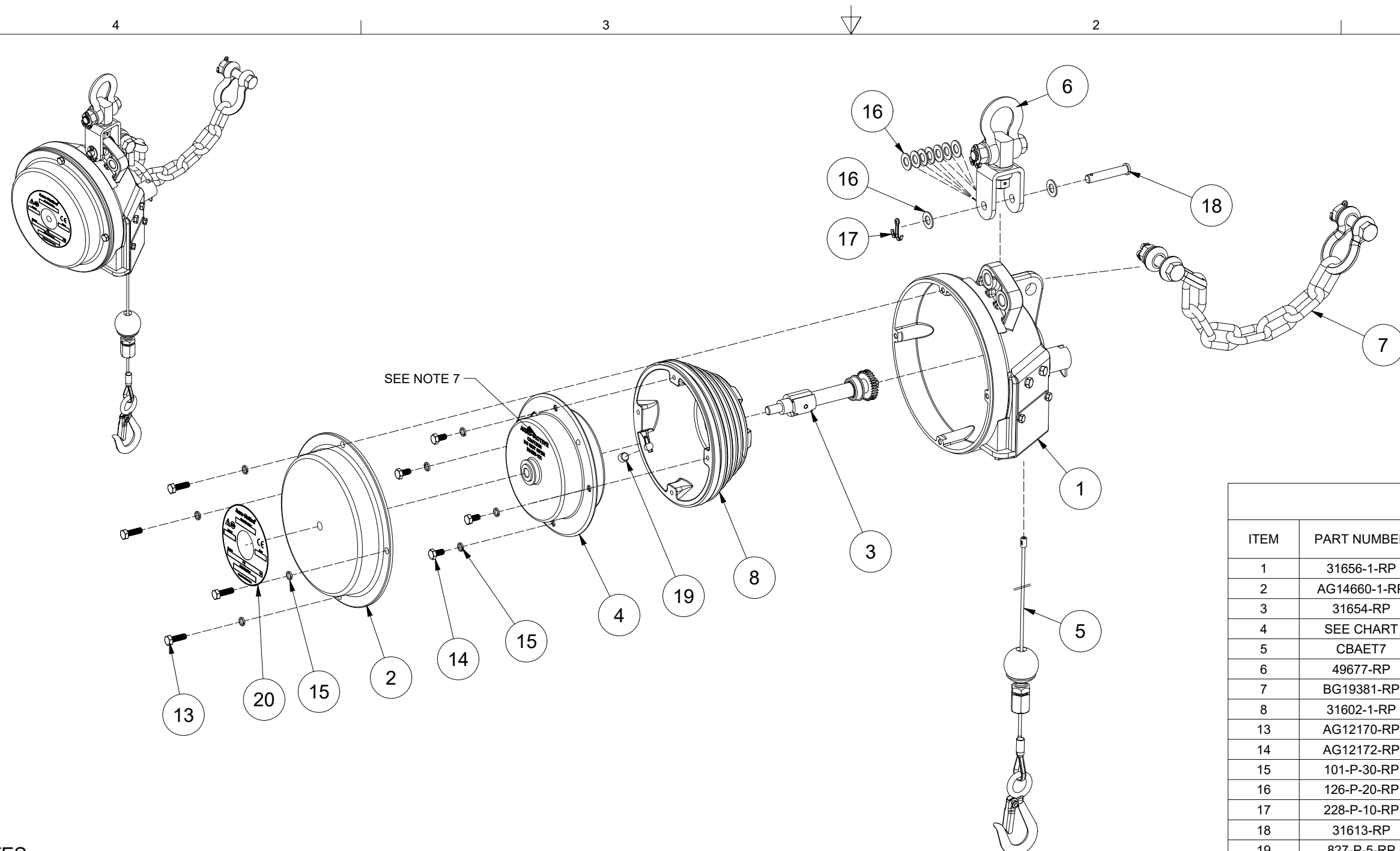
- NOTES:**
1. SHEET 1 OF 7 SHOWS STANDARD EA BALANCER IN OFFER.
 2. DIMENSIONS ARE FOR REFERENCE PURPOSES.
 3. BALANCERS ALWAYS COMES EQUIPPED WITH SAFETY CHAIN. VIEWS W/O CHAIN ARE FOR REFERENCE ONLY TO SHOW MAJOR BALANCER CHARACTERISTICS.

SECTION A-A



DETAIL A

QUALITY SYMBOLS	THIS DRAWING CONTAINS INFORMATION THAT IS PROPRIETARY TO Aero-Motive GmbH AND SHOULD NOT BE USED WITHOUT WRITTEN PERMISSION									
	ECN DESCRIPTION: DRAWING MIGRATION TO A-M UPDATE DRAWING			DIMENSION UNITS INCH / MM		SCALE NTS		Aero-Motive® DESCRIPTION EA SERIES OF BALANCERS SALES DRAWING		
$\nabla_s = 0$	ECN NUMBER: AM2021-0017			mm		INCH				
$\nabla = 0$	DRAWN:	MCHOJECKI	2021-03-15	4 PLACE	±	----	±	----	SALES DRAWING	
$\nabla_c = 0$	CHECKED:	MCHOJECKI	2021-03-15	3 PLACE	±	----	±	----		
	APPROVED:	RHOTCA	2021-03-15	2 PLACE	±	----	±	----	DOCUMENT NO.	
	INITIAL REVISION:			1 PLACE	±	----	±	----	SD-XXEA-001	
	DRAWN:	VOU	2016-04-03	0 PLACE	±	----	±	----	REVISION	
	APPROVED:	JFMURPHY	2016-05-03	ANGULAR TOL. ± 0.5°				C		
OLD MAT. NUMBER	DRAFT WHERE APPLICABLE MUST REMAIN WITHIN DIMENSIONS			SIZE B-SIZE		THIRD ANGLE PROJECTION		CUSTOMER		SHEET NUMBER
N/A								GENERAL MARKET		1 of 7



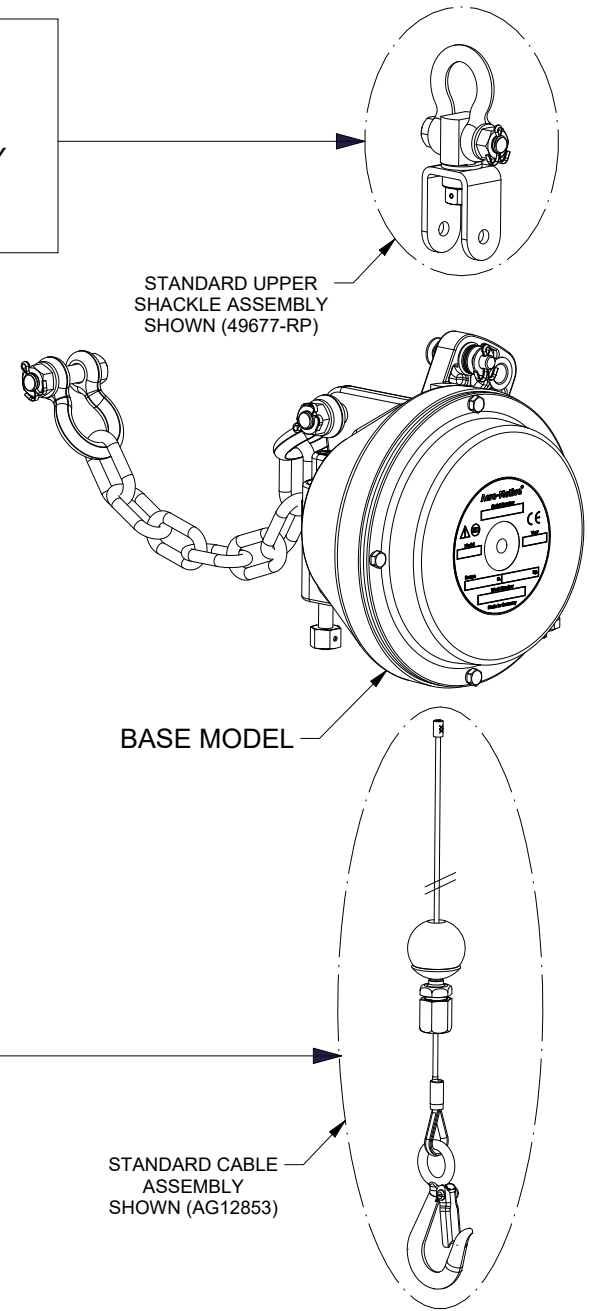
BILL OF MATERIALS		
ITEM	PART NUMBER	DESCRIPTION
1	31656-1-RP	MAIN HOUSING ASSEMBLY FOR EA/EL BALANCERS
2	AG14660-1-RP	BALANCER COVER
3	31654-RP	MAIN SHAFT ASSEMBLY FOR E BALANCER
4	SEE CHART	SPRING CASSETTE ASSEMBLY
5	CBAET7	CABLE ASSEMBLY FOR EA BALANCERS
6	49677-RP	UPPER SHACKLE ASSEMBLY FOR E BALANCERS
7	BG19381-RP	SAFETY CHAIN ASSEMBLY FOR E/J/K/L BALANCERS
8	31602-1-RP	CABLE DRUM MACHINED FOR EA BALANCER
13	AG12170-RP	HEX HEAD SCREW
14	AG12172-RP	HEX HEAD SCREW
15	101-P-30-RP	SPLIT LOCK WASHER
16	126-P-20-RP	WASHER
17	228-P-10-RP	COTTER PIN
18	31613-RP	CLEVIS PIN
19	827-P-5-RP	HEX SOCKET PLUG
20	N/A	GLOBAL ROUND LABEL

- NOTES:**
- BALANCERS ARE 100% INSPECTED & PRE-TENSIONED TO MAX. WEIGHT.
 - HOUSINGS ARE MADE FROM ALUMINUM CASTING.THEY ARE POWDER COATED TO MEET HARSH INDUSTRIAL ENVIRONMENTS.
 - ALWAYS READ INSTRUCTIONS MANUAL BEFORE USING BALANCERS.
 - BALANCERS ARE NOT TO BE USED AS RETRACTORS THEIR MAIN PURPOSE BEING TO BALANCE A LOAD AND NOT TO RETRACT ONE.
 - OVERALL DIMENSIONS ARE FOR REFERENCE ONLY.
 - WHEN MOUNTING BALANCER, ALWAYS MAKE SURE THAT SAFETY PIN WHICH COMES WITH SHACKLE IS INSTALLED & SECURED.
 - SPRING ASSEMBLY IS ALWAYS ENGRAVED WITH PART NUMBER AND DESIGNATED COLOR CODE (SEE SHEET 3 OF 7).
 - PREVIOUS DOCUMENT NUMBER # SD-130172-003.

QUALITY SYMBOLS 	THIS DRAWING CONTAINS INFORMATION THAT IS PROPRIETARY TO Aero-Motive GmbH AND SHOULD NOT BE USED WITHOUT WRITTEN PERMISSION					
	ECN DESCRIPTION: DRAWING MIGRATION TO A-M UPDATE DRAWING		DIMENSION UNITS INCH / MM	SCALE NTS		DESCRIPTION EA SERIES OF BALANCERS SALES DRAWING
	ECN NUMBER: AM2021-0017		GENERAL TOLERANCES (UNLESS SPECIFIED) Applicable Standards ASME Y14.5M ISO 1660			
	DRAWN: MCHOJECKI	2021-03-15	4 PLACE	± --- ± ---		
CHECKED: MCHOJECKI	2021-03-15	3 PLACE	± --- ± ---			
APPROVED: RHOTCA	2021-03-15	2 PLACE	± --- ± ---			
INITIAL REVISION:		1 PLACE	± --- ± ---			
DRAWN: VOU	2016-04-03	0 PLACE	± --- ± ---			
APPROVED: JFMURPHY	2016-05-03	ANGULAR TOL. ± 0.5°				
OLD MAT. NUMBER	DRAFT WHERE APPLICABLE MUST REMAIN WITHIN DIMENSIONS	SIZE B-SIZE	THIRD ANGLE PROJECTION		SALES DRAWING DOCUMENT NO. SD-XXEA-001 REVISION C CUSTOMER GENERAL MARKET SHEET NUMBER 2 of 7	
N/A						

BALANCER BASE MODEL	WEIGHT RANGE		CABLE TRAVEL		ITEM 4 SPRING CASSETTE ASSEMBLY		BALANCER OUTER COLOR
	MODEL NUMBER	LBS	KGS	FEET	METER	PART NUMBER	
10EA	5.0 - 11.0	2.3 - 5.0	6	1.8	31659-10	● PURPLE	BLUE
20EA	11.0 - 25.0	5.0 - 11.0			31659-20	○ WHITE	BLUE
30EA	20.0 - 31.0	9.0 - 14.0			31659-30	● CHERRY	BLUE
40EA	29.0 - 40.0	13.0 - 18.0			31659-40	● BLUE	BLUE
50EA	40.0 - 51.0	18.0 - 23.0			31659-50	● BLACK	BLUE
60EA	51.0 - 62.0	23.0 - 28.0	▼	▼	31659-60	● GREEN	BLUE

IMPORTANT
 ALL BALANCERS WITH CUSTOM CABLE ASSEMBLIES
 OR UPPER SHACKLE ASSEMBLY SHARE SAME PARTS AS BASE
 MODELS FROM THE BILL OF MATERIALS EXCEPT CABLE ASSEMBLY
 OR UPPER SHACKLE ASSEMBLY.
 (SEE CUSTOMIZED CHART, SHEET 4 OF 7 AND SHEET 5 OF 7)



CUSTOMIZED "EA" BALANCERS

BALANCER BASE MODEL WITH SUFFIX	EXAMPLE	UPPER SHACKLE ASSEMBLY	CABLE ASSEMBLY	NOTES
-NC	XXEA-NC (EX. 60EA-NC)	STANDARD SHACKLE ASSEMBLY	NYLON COATED STEEL CABLE ASSEMBLY WITH EYE HOOK, HARD SWAGE	SEE SHEET 4 OF 5
-SS	XXEA-SS (EX. 60EA-SS)	STANDARD SHACKLE ASSEMBLY	STAINLESS STEEL CABLE ASSEMBLY WITH EYE HOOK, HARD SWAGE	SEE SHEET 4 OF 5
U	XXEAU (EX. 60EAU)	UPPER BULLARD HOOK SHACKLE ASSEMBLY	STANDARD CABLE ASSEMBLY WITH EYE HOOK, HARD SWAGE	SEE SHEET 4 OF 5
B	XXEAB (EX. 60EAB)	STANDARD SHACKLE ASSEMBLY	CABLE ASSEMBLY WITH BULLARD HOOK, HARD SWAGE	SEE SHEET 4 OF 5
BU	XXEABU (EX. 60EABU)	UPPER BULLARD HOOK SHACKLE ASSEMBLY	CABLE ASSEMBLY WITH BULLARD HOOK, HARD SWAGE	SEE SHEET 4 OF 5
C	XXEAC (EX. 60EAC)	STANDARD SHACKLE ASSEMBLY	CABLE ASSEMBLY WITH WIRE ROPE CLAMPS & STANDARD EYE HOOK	SEE SHEET 4 OF 5
BC	XXEABC (EX. 60EABC)	STANDARD SHACKLE ASSEMBLY	CABLE ASSEMBLY WITH WIRE ROPE CLAMPS & BULLARD HOOK	SEE SHEET 4 OF 5
BCU	XXEABCU (EX. 60EABCU)	UPPER BULLARD HOOK SHACKLE ASSEMBLY	CABLE ASSEMBLY WITH WIRE ROPE CLAMPS & BULLARD HOOK	SEE SHEET 5 OF 5
BCX	XXEABCX (EX. 60EABCX)	STANDARD SHACKLE ASSEMBLY	CABLE ASSEMBLY WITH WIRE ROPE CLAMPS / INSULATED THIMBLE & BULLARD HOOK	SEE SHEET 5 OF 5
BCXU	XXEABCXU (EX. 60EABCXU)	UPPER BULLARD HOOK SHACKLE ASSEMBLY	CABLE ASSEMBLY WITH WIRE ROPE CLAMPS / INSULATED THIMBLE & BULLARD HOOK	SEE SHEET 5 OF 5
-10	XXEA-10 (EX. 60EA-10)	STANDARD SHACKLE ASSEMBLY	CABLE ASSEMBLY WITH EYE HOOK, HARD SWAGE - 10 FT [3.0 M]	SEE SHEET 5 OF 5
U-10	XXEAU-10 (EX. 60EAU-10)	UPPER BULLARD HOOK SHACKLE ASSEMBLY	CABLE ASSEMBLY WITH EYE HOOK, HARD SWAGE - 10 FT [3.0 M]	SEE SHEET 5 OF 5
B-10	XXEAB-10 (EX. 60EAB-10)	STANDARD SHACKLE ASSEMBLY	CABLE ASSEMBLY WITH BULLARD HOOK, HARD SWAGE - 10 FT [3.0 M]	SEE SHEET 5 OF 5
BU-10	XXEABU-10 (EX. 60EABU-10)	UPPER BULLARD HOOK SHACKLE ASSEMBLY	CABLE ASSEMBLY WITH BULLARD HOOK, HARD SWAGE - 10 FT [3.0 M]	SEE SHEET 5 OF 5

QUALITY SYMBOLS 	THIS DRAWING CONTAINS INFORMATION THAT IS PROPRIETARY TO Aero-Motive GmbH AND SHOULD NOT BE USED WITHOUT WRITTEN PERMISSION											
	ECN DESCRIPTION: DRAWING MIGRATION TO A-M UPDATE DRAWING				DIMENSION UNITS INCH / MM		SCALE NTS		Aero-Motive® DESCRIPTION EA SERIES OF BALANCERS SALES DRAWING			
	ECN NUMBER: AM2021-0017				mm		INCH					
	DRAWN: MCHOJECKI		2021-03-15		4 PLACE ± --- ± ---				SALES DRAWING DOCUMENT NO. SD-XXEA-001 REVISION C			
	CHECKED: MCHOJECKI		2021-03-15		3 PLACE ± --- ± ---							
	APPROVED: RHOTCA		2021-03-15		2 PLACE ± --- ± ---							
	INITIAL REVISION:				1 PLACE ± --- ± ---				CUSTOMER GENERAL MARKET SHEET NUMBER 3 of 7			
	DRAWN: VOUE		2016-04-03		0 PLACE ± --- ± ---							
	APPROVED: JFMURPHY		2016-05-03		ANGULAR TOL. ± 0.5°							
	OLD MAT. NUMBER N/A		DRAFT WHERE APPLICABLE MUST REMAIN WITHIN DIMENSIONS		SIZE B-SIZE		THIRD ANGLE PROJECTION 					

REFERENCE TABLE TO PROVIDE CUSTOMIZED BALANCERS IDENTIFICATION

BALANCER W/ SUFFIX DESCRIPTION	XXEA-NC SERIES OF BALANCERS (EXAMPLE: 40EA-NC, 60EA-NC ETC.)		XXEA-SS SERIES OF BALANCERS (EXAMPLE: 40EA-SS, 60EA-SS ETC.)		XXEAU SERIES OF BALANCERS (EXAMPLE: 40EAU, 60EAU ETC.)		XXEAB SERIES OF BALANCERS (EXAMPLE: 40EAB, 60EAB ETC.)		XXEABU SERIES OF BALANCERS (EXAMPLE: 40EABU, 60EABU ETC.)		XXEAC SERIES OF BALANCER (EXAMPLE: 40EAC, 60EAC ETC.)		XXEABC SERIES OF BALANCER (EXAMPLE: 40EABC, 60EABC ETC.)								
UPPER SHACKLE ASSEMBLY	STANDARD UPPER SHACKLE ASSEMBLY:		STANDARD UPPER SHACKLE ASSEMBLY:		UPPER BULLARD HOOK SHACKLE ASSEMBLY:		STANDARD UPPER SHACKLE ASSEMBLY:		UPPER BULLARD HOOK SHACKLE ASSEMBLY:		STANDARD UPPER SHACKLE ASSEMBLY:		STANDARD UPPER SHACKLE ASSEMBLY:								
	PART NUMBER	49677-RP	PART NUMBER	49677-RP	PART NUMBER	59499-RP	PART NUMBER	49677-RP	PART NUMBER	59499-RP	PART NUMBER	49677-RP	PART NUMBER	49677-RP							
CABLE ASSEMBLY	CABLE ASSEMBLY WITH EYE HOOK & CLIP HARD SWAGE:			SS CABLE ASSEMBLY WITH SS EYE HOOK & CLIP HARD SWAGE:			STANDARD CABLE ASSEMBLY WITH EYE HOOK & CLIP HARD SWAGE:			CABLE ASSEMBLY WITH BULLARD HOOK & HARD SWAGE:			CABLE ASSEMBLY WITH BULLARD HOOK & HARD SWAGE:			CABLE ASSEMBLY WITH EYE HOOK & CLIP ADJUSTABLE CLAMPS:			CABLE ASSEMBLY WITH BULLARD HOOK & ADJUSTABLE CLAMPS:		
	PART NUMBER	CABLE TRAVEL		PART NUMBER	CABLE TRAVEL		PART NUMBER	CABLE TRAVEL		PART NUMBER	CABLE TRAVEL		PART NUMBER	CABLE TRAVEL		PART NUMBER	CABLE TRAVEL		PART NUMBER	CABLE TRAVEL	
		FT	M		FT	M		FT	M		FT	M		FT	M		FT	M		FT	M
	CBAET7-NC	6	1.8	CBAET7-SS	6	1.8	CBAET7	6	1.8	CBAEB7	6	1.8	CBAEB7	6	1.8	CBAECT	6	1.8	CBAECB	6	1.8

QUALITY SYMBOLS OLD MAT. NUMBER N/A	THIS DRAWING CONTAINS INFORMATION THAT IS PROPRIETARY TO Aero-Motive GmbH AND SHOULD NOT BE USED WITHOUT WRITTEN PERMISSION											
	ECN DESCRIPTION: DRAWING MIGRATION TO A-M UPDATE DRAWING				DIMENSION UNITS INCH / MM		SCALE NTS		Aero-Motive® DESCRIPTION EA SERIES OF BALANCERS SALES DRAWING			
	ECN NUMBER: AM2021-0017				mm		INCH					
	DRAWN: MCHOJECKI		2021-03-15		4 PLACE ± --- ± ---		GENERAL TOLERANCES (UNLESS SPECIFIED) <small>Applicable Standards ASME Y14.5M ISO 1660</small>		SALES DRAWING DOCUMENT NO. SD-XXEA-001			
	CHECKED: MCHOJECKI		2021-03-15		3 PLACE ± --- ± ---		INITIAL REVISION:					
	APPROVED: RHOTCA		2021-03-15		2 PLACE ± --- ± ---		1 PLACE ± --- ± ---		REVISION C			
	DRAWN: VOU		2016-04-03		0 PLACE ± --- ± ---		ANGULAR TOL. ± 0.5°					
	APPROVED: JFMURPHY		2016-05-03		THIRD ANGLE PROJECTION		CUSTOMER GENERAL MARKET					
	DRAFT WHERE APPLICABLE MUST REMAIN WITHIN DIMENSIONS		SIZE B-SIZE								SHEET NUMBER 4 of 7	

4

3

2

1

REFERENCE TABLE TO PROVIDE CUSTOMIZED BALANCERS IDENTIFICATION

BALANCER W/ SUFFIX DESCRIPTION	XXEABCU SERIES OF BALANCERS (EXAMPLE: 40EABCU, 60EABCU ETC.)	XXEABCX SERIES OF BALANCERS (EXAMPLE: 40EABCX, 60EABCX ETC.)	XXEABCXU SERIES OF BALANCERS (EXAMPLE: 40EABCXU, 60EABCXU ETC.)	XXEA-10 SERIES OF BALANCERS (EXAMPLE: 40EA-10, 60EA-10 ETC.)	XXEAU-10 SERIES OF BALANCERS (EXAMPLE: 40EAU-10, 60EAU-10 ETC.)	XXEAB-10 SERIES OF BALANCER (EXAMPLE: 40EAB-10, 60EAB-10 ETC.)	XXEABU-10 SERIES OF BALANCER (EXAMPLE: 40EABU-10, 60EABU-10 ETC.)													
UPPER SHACKLE ASSEMBLY	UPPER BULLARD HOOK SHACKLE ASSEMBLY:	STANDARD UPPER SHACKLE ASSEMBLY	UPPER BULLARD HOOK SHACKLE ASSEMBLY:	STANDARD UPPER SHACKLE ASSEMBLY	UPPER BULLARD HOOK SHACKLE ASSEMBLY:	STANDARD UPPER SHACKLE ASSEMBLY	UPPER BULLARD HOOK SHACKLE ASSEMBLY:													
	PART NUMBER	59499-RP	PART NUMBER	49677-RP	PART NUMBER	59499-RP	PART NUMBER	49677-RP	PART NUMBER	59499-RP										
CABLE ASSEMBLY	CABLE ASSEMBLY WITH BULLARD HOOK & ADJUSTABLE CLAMPS		CABLE ASSEMBLY WITH BULLARD HOOK, ADJUSTABLE CLAMPS & INSULATED THIMBLE:		CABLE ASSEMBLY WITH BULLARD HOOK, ADJUSTABLE CLAMPS & INSULATED THIMBLE:		CABLE ASSEMBLY WITH EYE HOOK & CLIP HARD SWAGE:		CABLE ASSEMBLY WITH EYE HOOK & CLIP HARD SWAGE:		CABLE ASSEMBLY WITH BULLARD HOOK & HARD SWAGE:		CABLE ASSEMBLY WITH BULLARD HOOK & HARD SWAGE:							
	PART NUMBER	CABLE TRAVEL		PART NUMBER	CABLE TRAVEL		PART NUMBER	CABLE TRAVEL		PART NUMBER	CABLE TRAVEL		PART NUMBER	CABLE TRAVEL						
		FT	M		FT	M		FT	M		FT	M		FT	M					
	CBAECB	6	1.8	CBAECBX	6	1.8	CBAECBX	6	1.8	CBAETL	10	3.0	CBAETL	10	3.0	CBAEBL	10	3.0	CBAEBL	10

QUALITY SYMBOLS = 0 = 0 = 0	THIS DRAWING CONTAINS INFORMATION THAT IS PROPRIETARY TO Aero-Motive GmbH AND SHOULD NOT BE USED WITHOUT WRITTEN PERMISSION											
	ECN DESCRIPTION: DRAWING MIGRATION TO A-M UPDATE DRAWING				DIMENSION UNITS INCH / MM		SCALE NTS		Aero-Motive® DESCRIPTION EA SERIES OF BALANCERS SALES DRAWING			
	ECN NUMBER: AM2021-0017				mm		INCH					
	DRAWN: MCHOJECKI		2021-03-15		4 PLACE ± --- ± ---		3 PLACE ± --- ± ---		SALES DRAWING DOCUMENT NO. SD-XXEA-001 REVISION C			
	CHECKED: MCHOJECKI		2021-03-15		2 PLACE ± --- ± ---		1 PLACE ± --- ± ---					
	APPROVED: RHOTCA		2021-03-15		0 PLACE ± --- ± ---		ANGULAR TOL. ± 0.5°					
	DRAWN: VOU		2016-04-03		0 PLACE ± --- ± ---		THIRD ANGLE PROJECTION		CUSTOMER GENERAL MARKET			
	APPROVED: JFMURPHY		2016-05-03		ANGULAR TOL. ± 0.5°				SHEET NUMBER 5 of 7			
	OLD MAT. NUMBER N/A		DRAFT WHERE APPLICABLE MUST REMAIN WITHIN DIMENSIONS		SIZE B-SIZE							

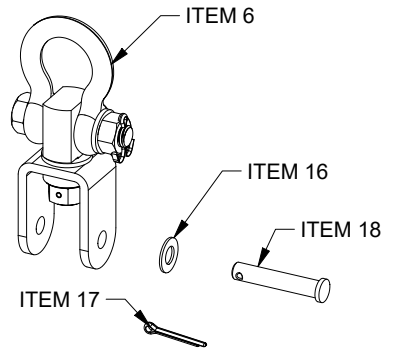
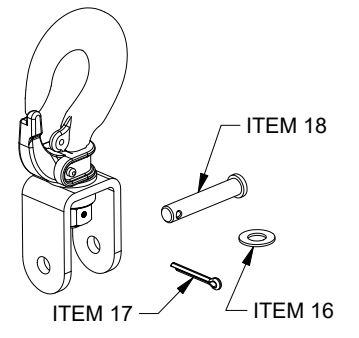
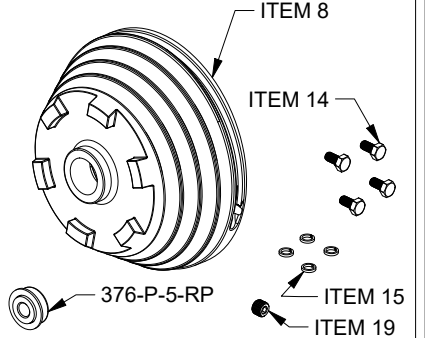
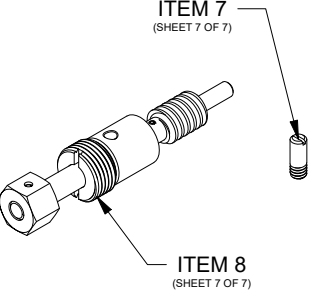
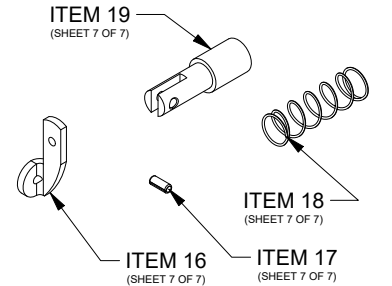
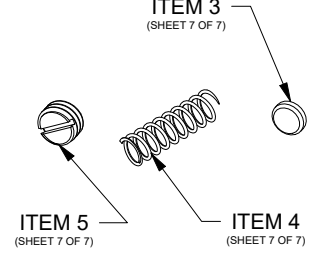
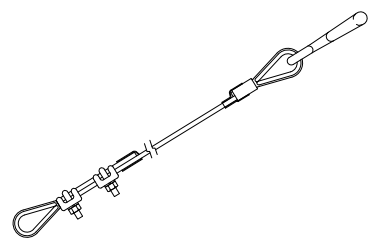
4

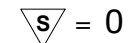
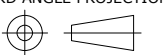
3

2

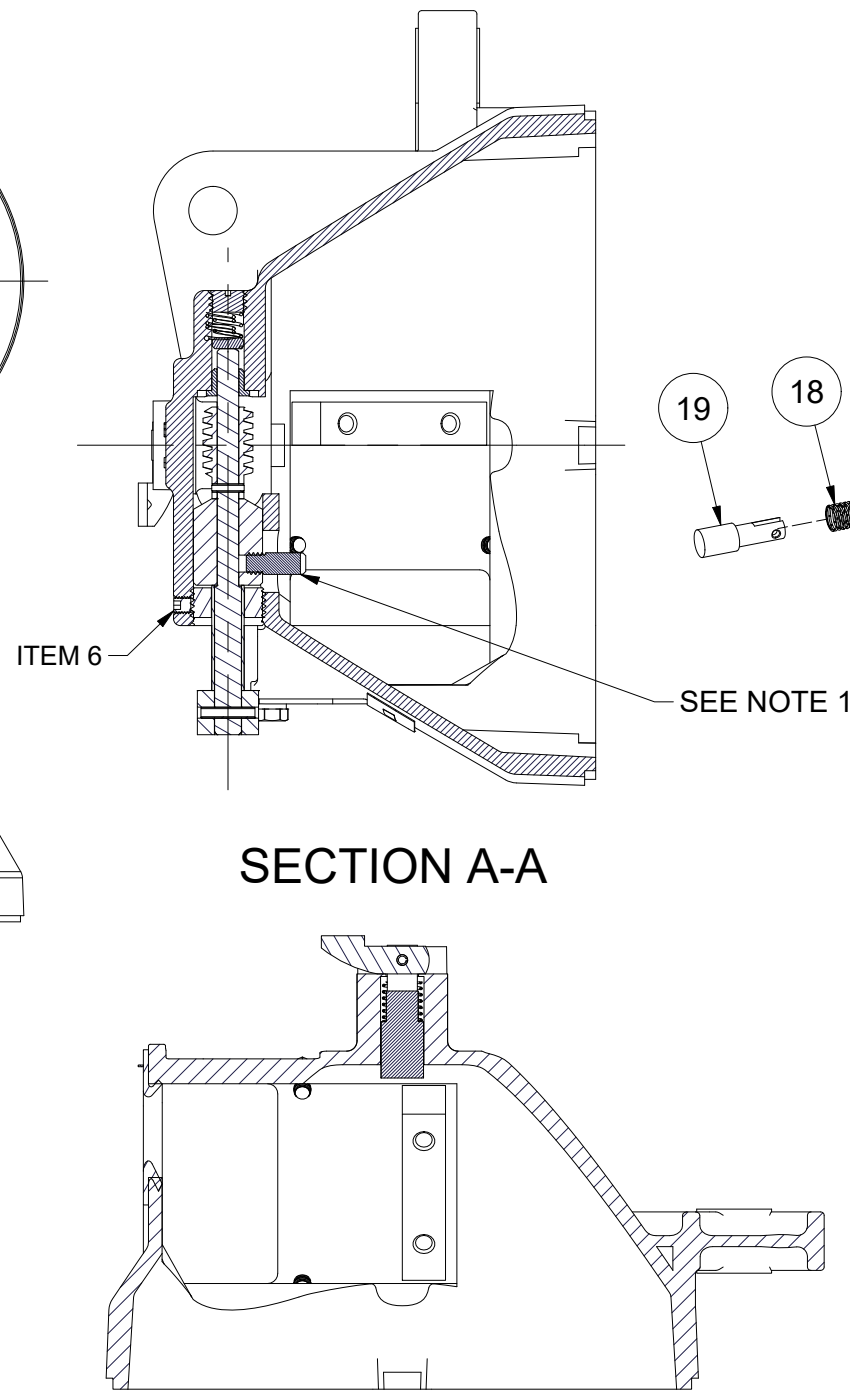
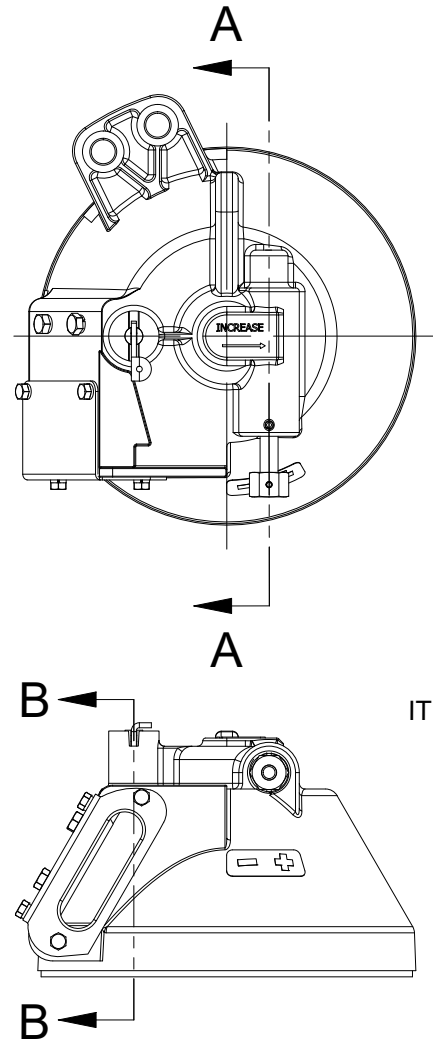
1

REPAIR KITS

UPPER SHACKLE ASSEMBLY KIT	UPPER SHACKLE ASSEMBLY W/BULLARD HOOK KIT	DRUM KIT	WORM SHAFT ASSEMBLY KIT	DRUM LOCK KIT	DROP STOP ACTUATOR KIT	OVERHANG CABLE EXTENSIONS
REPAIR KIT PART NUMBER UHKE5	REPAIR KIT PART NUMBER UHKEB	REPAIR KIT PART NUMBER DRME7	REPAIR KIT PART NUMBER WRME	REPAIR KIT PART NUMBER DLKE	REPAIR KIT PART NUMBER DSAEA	REPAIR KIT PART NUMBER CBOL020
						
USED FOR REPAIRS ON FOLLOWING MODELS:	USED FOR REPAIRS ON FOLLOWING MODELS:	USED FOR REPAIRS ON FOLLOWING MODELS:	USED FOR REPAIRS ON FOLLOWING MODELS:	USED FOR REPAIRS ON FOLLOWING MODELS:	USED FOR REPAIRS ON FOLLOWING MODELS:	USED FOR REPAIRS ON FOLLOWING MODELS:
MODEL NUMBER	MODEL NUMBER	MODEL NUMBER	MODEL NUMBER	MODEL NUMBER	MODEL NUMBER	MODEL NUMBER
<p>ALL EA MODELS WILL BE USING THIS REPAIR KIT TO REPLACE THE UPPER SHACKLE ASSEMBLY</p> <p>FOR ALL P/N PLEASE SEE MATERIALS TABLE ON SHEET 2 OF 7.</p>	<p>CUSTOM EA MODELS WILL BE USING THIS REPAIR KIT TO REPLACE THE UPPER SHACKLE ASSEMBLY</p> <p>FOR ALL P/N PLEASE SEE MATERIALS TABLE ON SHEET 2 OF 7.</p>	<p>ALL EA MODELS WILL BE USING THIS REPAIR KIT TO REPLACE THE DRUM</p> <p>FOR ALL P/N PLEASE SEE MATERIALS TABLE ON SHEET 2 OF 7.</p>	<p>ALL EA MODELS WILL BE USING THIS REPAIR KIT TO REPLACE THE WORM SHAFT ASSEMBLY</p> <p>FOR ALL P/N PLEASE SEE MATERIALS TABLE ON SHEET 7 OF 7.</p>	<p>ALL EA MODELS WILL BE USING THIS REPAIR KIT TO REPLACE THE DRUM LOCK</p> <p>FOR ALL P/N PLEASE SEE MATERIALS TABLE ON SHEET 7 OF 7.</p>	<p>ALL EA MODELS WILL BE USING THIS REPAIR KIT TO REPLACE THE DROP STOP ACTUATOR</p> <p>FOR ALL P/N PLEASE SEE MATERIALS TABLE ON SHEET 7 OF 7.</p>	<p>ALL EA MODELS CAN USE THESE OVERHANG CABLES TO EXTEND THE TOOL OR LOAD REACH. THE OVERHANG CABLES WILL NOT INCREASE LOAD TRAVEL.</p>

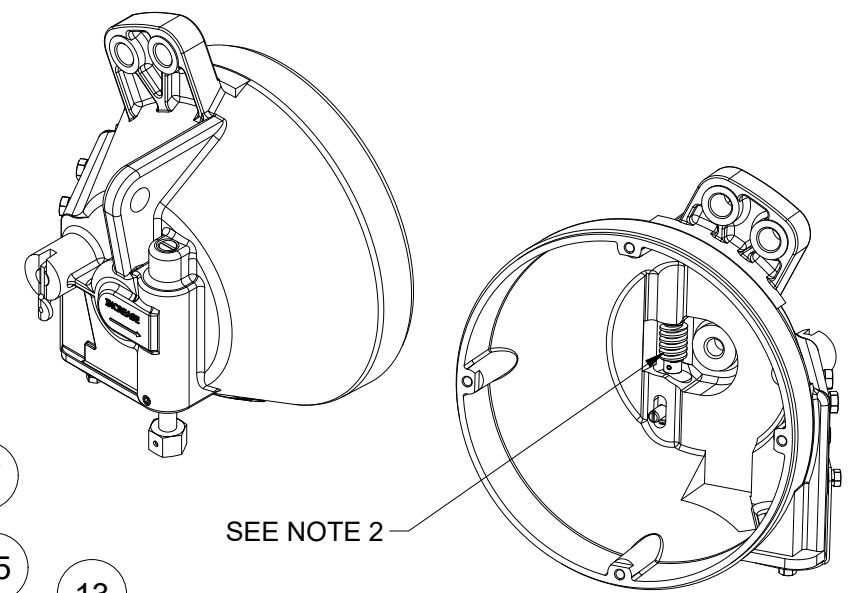
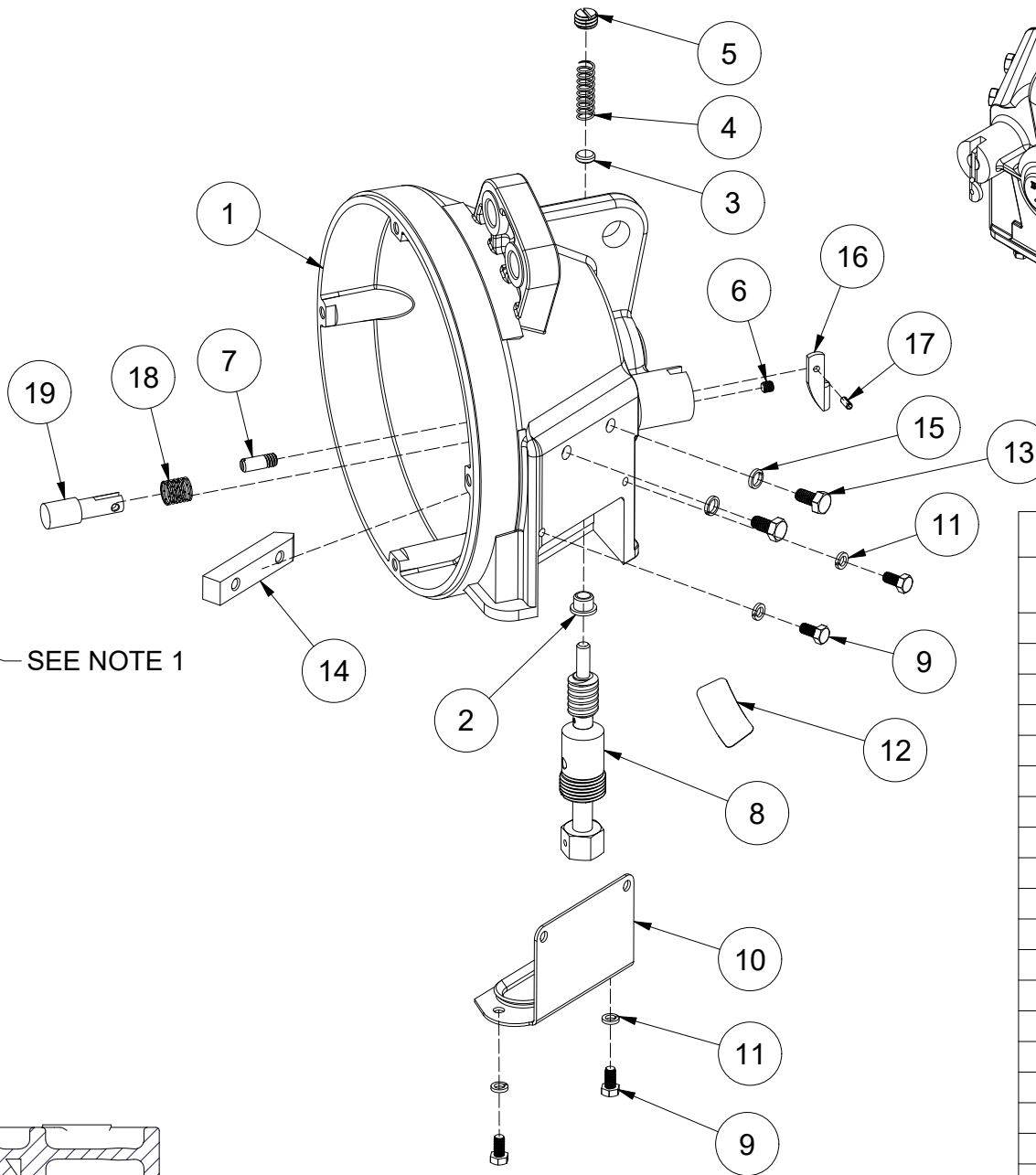
QUALITY SYMBOLS  = 0  = 0  = 0	THIS DRAWING CONTAINS INFORMATION THAT IS PROPRIETARY TO Aero-Motive GmbH AND SHOULD NOT BE USED WITHOUT WRITTEN PERMISSION											
	ECN DESCRIPTION: DRAWING MIGRATION TO A-M UPDATE DRAWING				DIMENSION UNITS INCH / MM		SCALE NTS		<h2 style="margin: 0;">Aero-Motive®</h2> <p style="margin: 0;">DESCRIPTION</p> <p style="margin: 0;">EA SERIES OF BALANCERS</p> <p style="margin: 0;">SALES DRAWING</p>			
	ECN NUMBER: AM2021-0017				GENERAL TOLERANCES (UNLESS SPECIFIED) <small>Applicable Standards ASME Y14.5M ISO 1660</small>		mm					
	DRAWN: MCHOJECKI		2021-03-15		4 PLACE ± --- ± ---		3 PLACE ± --- ± ---		2 PLACE ± --- ± ---		1 PLACE ± --- ± ---	
	CHECKED: MCHOJECKI		2021-03-15		0 PLACE ± --- ± ---		ANGULAR TOL. ± 0.5°		DOCUMENT NO. SD-XXEA-001		REVISION C	
APPROVED: RHOTCA		2021-03-15		DRAWN: VOU		2016-04-03		APPROVED: JFMURPHY		2016-05-03		
OLD MAT. NUMBER N/A		DRAFT WHERE APPLICABLE MUST REMAIN WITHIN DIMENSIONS		SIZE B-SIZE		THIRD ANGLE PROJECTION 		CUSTOMER GENERAL MARKET		SHEET NUMBER 6 of 7		

ITEM 1 - MAIN HOUSING ASSEMBLY



SECTION A-A

SECTION B-B



MAIN HOUSING BILL OF MATERIALS		
ITEM	PART NUMBER	DESCRIPTION
1	AG15176-1-RP	HOUSING
2	11060-RP	BEARING
3	11065-RP	SEAT SPRING
4	31609-RP	SPRING FOR SAFETY LOCK
5	31610-RP	RETAINING SCREW - SAFETY LOCK
6	AG12367-RP	SOCKET SET SCREW
7	31070-RP	SAFETY LOCK SLEEVE PIN
8	31653-RP	WORM SHAFT ASSEMBLY
9	AG12360-RP	HEX HEAD SCREW
10	31618-RP	CABLE GUIDE
11	101-P-15-RP	SPLIT LOCK WASHER
12	AG10058-RP	WARNING LABEL FOR J/K/E BALANCERS
13	AG12172-RP	HEX HEAD SCREW
14	AG15765-RP	WEAR PLATE
15	101-P-30-RP	SPLIT LOCK WASHER
16	31294-RP	LOCK LEVER FOR E/J/K/L BALANCERS
17	229-P-10-RP	PIN ROLL
18	31643-RP	SPRING FOR DRUM LOCK
19	M27130042-RP	SHAFT FOR MANUAL DRUM LOCK

- NOTES:
1. ENSURE THAT WORM SHAFT ROTATES AND MOVES FREELY ALONG ITS LONGITUDINAL AXIS.
 2. ALWAYS APPLY GREASE ON WORM SHAFT ASSEMBLY BEFORE ASSEMBLY BALANCER TOGETHER.

QUALITY SYMBOLS 	THIS DRAWING CONTAINS INFORMATION THAT IS PROPRIETARY TO Aero-Motive GmbH AND SHOULD NOT BE USED WITHOUT WRITTEN PERMISSION					
	ECN DESCRIPTION: DRAWING MIGRATION TO A-M UPDATE DRAWING		DIMENSION UNITS INCH / MM	SCALE NTS		DESCRIPTION EA SERIES OF BALANCERS SALES DRAWING
	ECN NUMBER: AM2021-0017		mm	INCH		
	DRAWN: MCHOJECKI	2021-03-15	4 PLACE ± --- ± ---			
CHECKED: MCHOJECKI	2021-03-15	3 PLACE ± --- ± ---				
APPROVED: RHOTCA	2021-03-15	2 PLACE ± --- ± ---				
INITIAL REVISION:		1 PLACE ± --- ± ---				
DRAWN: VOU	2016-04-03	0 PLACE ± --- ± ---				
APPROVED: JFMURPHY	2016-05-03	ANGULAR TOL. ± 0.5°				
OLD MAT. NUMBER N/A	DRAFT WHERE APPLICABLE MUST REMAIN WITHIN DIMENSIONS	SIZE B-SIZE	THIRD ANGLE PROJECTION 	CUSTOMER GENERAL MARKET	REVISION C SHEET NUMBER 7 of 7	