

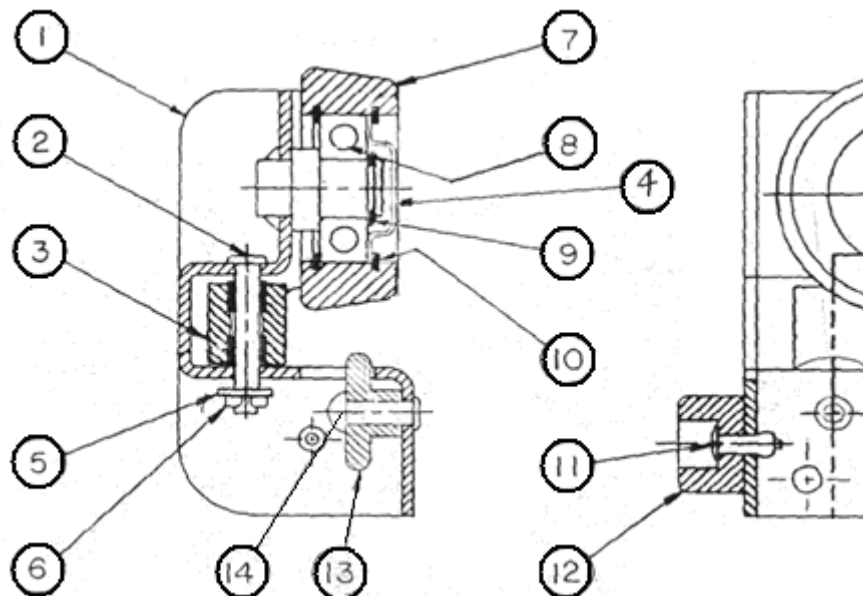
6000 Series Festoon Car Parts

There are 3 different length 6000 series cars; 7" 10" and 13". The BT balancer trolleys are a 10" car. All side plates use common wheels. Every car has load wheels and side rollers. Some cars also come with anti-kick-up rollers. Cars use either all "Urethane"(plastic) or steel wheels. If most all your wheels need replacement, it can be nearly just as much cost to replace the whole car with new.

Steel Wheels S6xxx-xx				Urethane Wheels 06xxx-xx			
Item	Part Number	Qty	Description	Item	Part Number	Qty	
2	01235P0006	4	Pin Roller Bushing Cover Washer Cotter Pin Load Wheel Tapered Load Wheel Flat (x6xx1-xx) Bearing Retaining Ring Retaining Ring Pop Rivet Bumper KU Wheel Shaft	2	01235P0006	4	
3	6295400000	4		3	6206600000	4	
4	M55100002	4		3a	00276P0033	8	
5	00126P0050	4		4	Not Used	NA	
6	00228P0011	4		5	00126P0050	4	
7*	M34730003	4		6	00228P0011	4	
	M34130013			7*	6104500000	4	
8	00376P0197	4		7*	6206700000	4	
9	00580P0139	4		8	Included w/ #7		
10	00583P0006	8		9	00580P0139	4	
11	00209P0024	4		10	Not Used	NA	
12	5993400000	4		11	00209P0024	4	
13**	6228300000	4		12	5993400000	4	
14	00208P0061	4		13**	6206800000	4	
			14	6206900000	4		

*Tapered wheel is shown in picture below.

** Unlike the other wheels on this car, replacing the item 13 kick-up wheel requires a new item 14 be staked to the item 1 car body to hold it. This process may require special tools to accomplish.



Complete Side Plate Assemblies

If you are in need of a complete side plate here are the part numbers. The cost of two complete side plates compared to the cost of the new car is often more than the cost of the complete new car assembly.

Carrier Part	Side Plate #
7" Cars	
0674x-10	621040000
0674x-11, 31	6210500000
S674x-10	6210600000
S674x-11, 31	6210600001
10" Cars	
0605x-10	620520000
0605x-11, 31	620530000
S605x-10	6205600000
S605x-11, 31	6205600001
13" Cars	
0638x / 0639x / D63xx-10	6224000000
0638x / 0639x / D63xx-11, 31	6224000001
S638x / S639x / SD63xx-10	6224100000
S638x / S639x / SD63xx-11, 31	6224100001

2 Required per carrier.